

***promac***  
ENGINEERING INDUSTRIES LIMITED



Over 50 years of  
Engineering Excellence  
in EPC

[www.promacindia.com](http://www.promacindia.com)





# Contents

## Vision:

"To become a world renowned provider of turnkey solutions in heavy engineering and manufacturing. We strive to design, manufacture and supply engineering products and customised solutions that exceed our customers' expectations".







01.	About us	01 - 02
02.	History and Milestones	03 - 04
03.	Global Footprint	05 - 06
04.	Industry Solutions	
	- Cement	07 - 18
	- Power	19 - 24
	- Mineral Beneficiation	25
	- Defence and Import Substitutes	25
	- Industrial Gear Boxes	25
05.	Infrastructure	
	- Machine Shop	27 - 28
	- Fabrication	29 - 30
	- Laboratory & Quality Control	31
	- Design and Engineering	32
06.	Technical Collaborations	33
07.	Testimonials	34
08.	Awards and Certificates	35
09.	Contact	36



# Company

About us







Promac Engineering Industries Limited ('Promac') is an EPC major, active in the Cement, Power, Steel, and Mineral Processing Sectors. Further, Promac has also entered the Defence Sector, manufacturing of Industrial Gear Boxes and Import Substitutes.

Promac was established in the early seventies in Bengaluru, India and is equipped with a state-of-the-art integrated manufacturing facility (Heavy Fabrication / Machining) spread across 50,000 sq.mtrs.

Promac provides turnkey design, engineering, and manufacturing solutions for Heavy Engineering Process Plants and Bulk Material Handling Systems.

Promac has successfully executed 50+ Cement Projects, 10+ Power Projects, 9 Sponge Iron Projects, 3 Mineral Processing Projects and several other spares and equipment supplies across 4 Continents in 25 Countries.



# History

## Company Milestones 1972 - 2021

<b>1972</b>	Established with a focus in manufacturing of bulk material handling systems
<b>1980</b>	Forays into manufacture & supply of VSK cement plants under technical collaboration with NCCBM, India
<b>1988</b>	Establishes technical collaboration with Nihon Cement Company, Japan (now known as Taiheiyo Engineering Corp.) for Rotary Kiln Cement Plant technology and successfully completes first cement plant upgrade
<b>2001</b>	Commissions on EPC basis a 2000 TPD cement plant for JK Cement Works, Rajasthan, India
<b>2008</b>	Commissions first Coal Handling Plant (CHP) Project for Karnataka Power Corporation Ltd for their Mega 1X 500 MW Power Plant at Bellary Thermal Power Station (BTPS), Karnataka, India
<b>2009</b>	Commissions on EPC basis a 950 TPD Cement Plant for Falcon Cements in the Kingdom of Bahrain
<b>2011</b>	Enters into technical collaboration with Famak S.A., Poland (Formerly known as Famur Famak S.A) for Stock Yard Equipment in Bulk Material Handling primarily used in Power Plants
<b>2012</b>	Commissions a 3000 TPD Integrated Cement Plant for Sagar Cements, Andhra Pradesh, India
<b>2012</b>	Commissions a 65 TPH Clinker Grinding Unit for Heidelberg Cement, Germany for their Liberia project

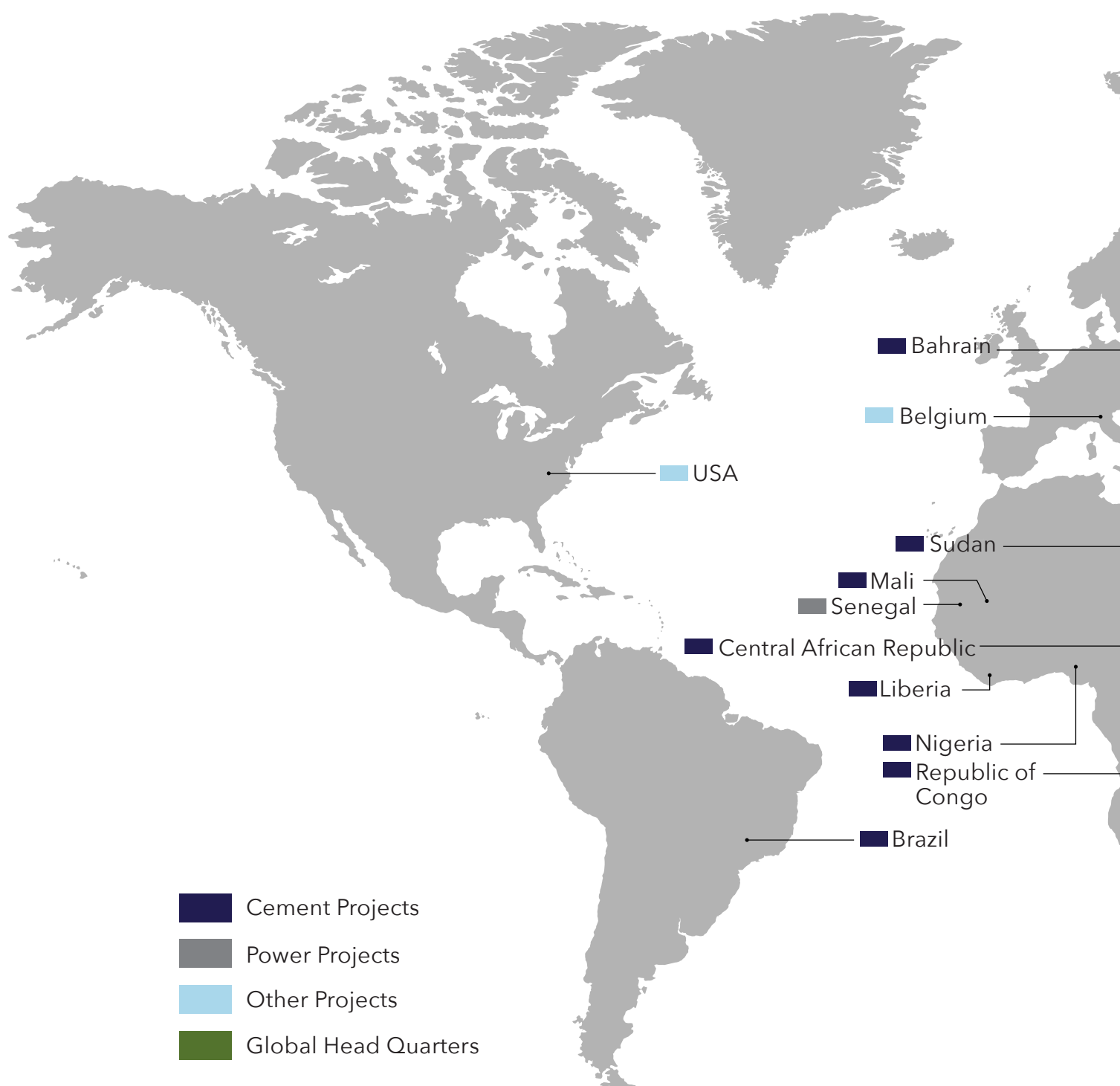


- 2014** ● Commissions a first of its kind EPC Project for a Dual-Process Grey / White (2800/1750) TPD Cement Plant for JK Cement Works, Fujairah, U.A.E.
- 2014** ● Commissions a 1500 TPD Cement Plant for Lake Cements Ltd in Tanzania, East Africa
- 2016** ● Commissions a 100 TPH Clinker Grinding Unit for Taiheiyo Cement Corporation in Cebu, Philippines
- 2017** ● Commissions a 2200 TPD Combi-Circuit (Roller Press + Ball Mill) Clinker Grinding Unit for Tokyo Eastern Cement Company, Trincomalee, Sri Lanka
- 2018** ● Commissions on EPC basis a 1x125 MW Thermal Power Plant for Compagnie d' Electricite' du Senegal (CES) Senegal, West Africa
- 2019** ● Commissions a 1600 TPD Clinker Grinding Unit at Mali, Africa for VICAT France
- 2021** ● Recieves approval from Research Design and Standards Organisation (RDSO) of Indian Railways for the Design of Wagon Tipplers & Side Arm Chargers as per latest G33 Rev 1 norms
- 2021** ● Forays into Defence sector and bags first order from Bharat Earth Movers Limited (BEML)
- 2022** ● Commissions 4 Paddle Feeders of 650 TPH capacity for Bellary Thermal Power Station, Karnataka India
- 2022** ● Commissions 1500 TPD Clinker Grinding Unit for Star Cement Corporation, Liberia
- 2022** ● Celebrates Golden Jubilee Year of operations

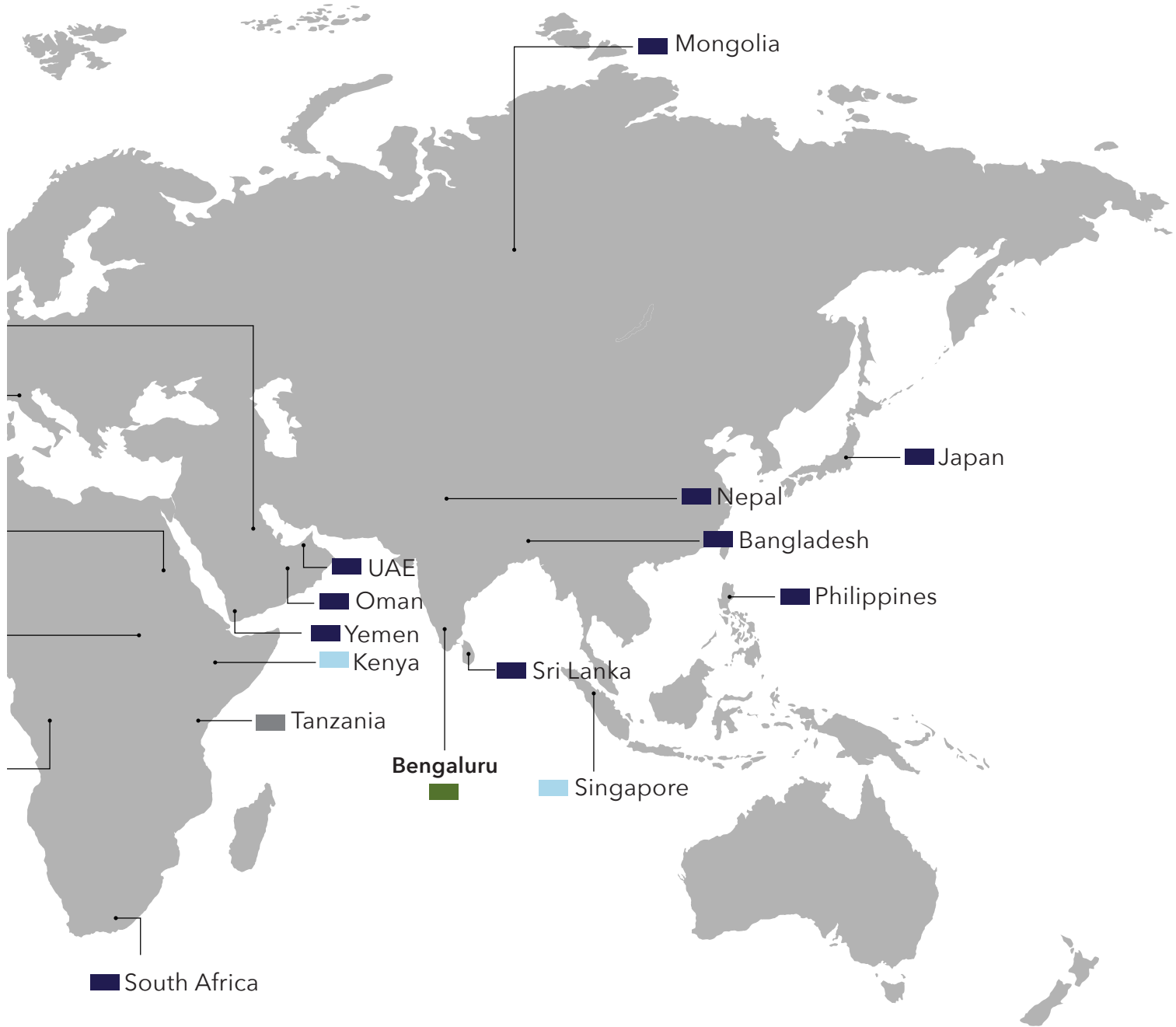


# Global Footprint

Accross 5 continents and 25 countries





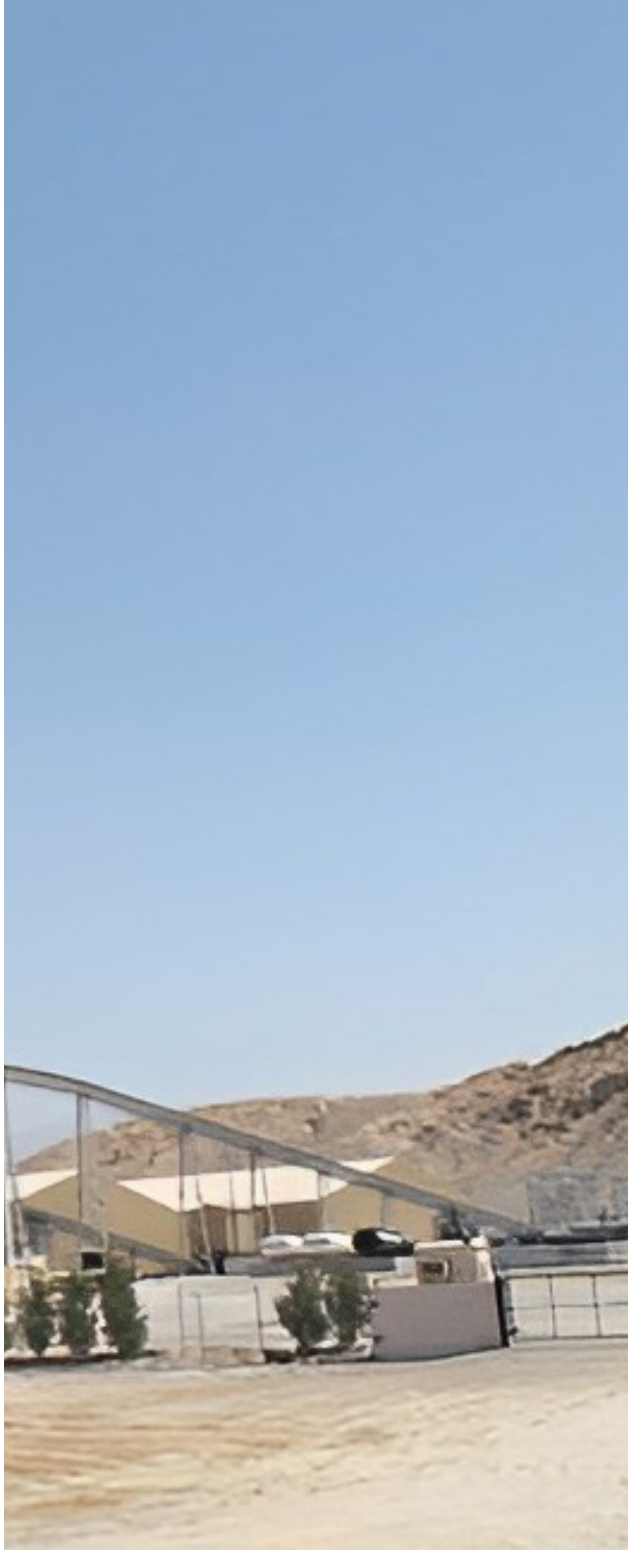




# Industry Solutions

## 1. Cement





Promac offers EPC solutions (up to 2 million tons per annum) for Grey Cement, White Cement, and Dual-process Plants.

Since 1988, Promac has had an exclusive technical collaboration with M/s. Taiheiyo Engineering Corporation (TEC), Japan, a subsidiary of the world renowned Taiheiyo Cement Corporation (TCC), Japan.

Promac offers design, engineering, manufacturing, supply, erection and commissioning of a wide range of equipment.



# Cement

Machines and Equipment

## Pyro Processing Equipment:

### 1. RSP Calciners

Reinforced Suspension Pre-heater  
(Taiheyo Engineering Corporation, Japan Design)

### 2. DDF Calciners

Dual Combustion Denitration Furnace  
(Taiheyo Engineering Corporation, Japan Design)

### 3. Pre Heater Cyclones

(Taiheyo Engineering Corporation, Japan Design)

### 4. Rotary Kilns

### 5. Grate Coolers

### 6. Decolorisers



Pre-heater Building depicting Calciner and Cyclones



Rotary Kiln



Decoloriser



Grate Cooler



# Cement

## Machines and Equipment

### Grinding Equipment:

#### 1. 'ASANO' Vertical Roller Mills:

- Limestone
  - Coal/Pet Coke
  - Clinker
- (Taiheyo Engineering Corporation, Japan Design)

#### 2. Ball Mills

#### 3. 'O-SEPA' Classifiers:

(Taiheyo Engineering Corporation, Japan Design)





# Cement

Machine and Equipment

## Material Handling Equipment:

1. Linear and Circular Type Stackers
2. Linear, Circular and Bucket Wheel Type Reclaimers
3. Rotaside Wagon Tippers
4. Side Arm Chargers
5. Apron Feeders
6. Belt Conveyors
7. Crushers (Impact and Hammer type)
8. Bulk Material Feeders
9. Deep Bucket Conveyors (DBC)



Linear Stacker



Bridge Reclaimer



Apron Feeder



Belt Conveyor



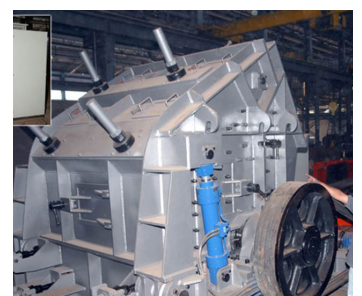
Wagon Tippler



Bulk Material Feeder



Deep Bucket Conveyor



Impact Crusher



# Cement

Machines/Equipment

## Pollution Control Equipment:

1. Pulse Jet Bag Filters and Bag Houses
2. Electrostatic Precipitators
3. Reverse Air Bag House

## Storage Silos:

1. Flat Bottom
2. Inverted Cone



Electrostatic Precipitator



Reverse Air Bag House



Silos



# Cement

## Key Projects

### A. Integrated Cement Plants:

1. JK Cement Works – A first of its kind 2800 TPD Grey / 1750 TPD White Cement Plant on EPC basis, Fujairah, U.A.E.
2. Sagar Cements Ltd - 3000 TPD Plant, Andhra Pradesh, India
3. Lake Cement Ltd - 1500 TPD Plant, Tanzania, Africa
4. Falcon Cements – 950 TPD Plant, Kingdom of Bahrain
5. The Nile Cement Co. Ltd, – 1000 TPD Plant, Sudan
6. Government of Republic of Congo – 600 TPD Plant, Republic of Congo, Africa
7. JK Cement Works, Mangrol, Rajasthan, India
8. Hills Cement Co Ltd. - 1000 TPD Plant, Meghalaya, India
9. Anjani Portland Cement Pvt. Ltd, - 900 TPD Plant, Andhra Pradesh, India
10. Government of Central African Republic - 400 TPD Plant, Bangui, Central African Republic

### B. Clinker Grinding Units:

1. Tokyo Eastern Cement Company Ltd - 110 TPH Clinker Grinding Unit, Sri Lanka
2. Taiheiyo Cement Philippines, Inc - 100 TPH Clinker Grinding Unit, Cebu, Philippines
3. VICAT Cement Group (Cements Et Matériaux Du Mali) - 80 TPH Clinker Grinding Unit, Mali, Africa
4. Heidelberg Cement (CEMENCO) - 65 TPH Clinker Grinding Unit, Liberia, Africa
5. Star Cement Corporation, 75 TPH Clinker Grinding Unit, Liberia
6. Lafarge South Africa Ltd - 25 TPH Clinker Grinding Unit, Richards Bay, South Africa
7. Star Cement Corporation, 75 TPH Clinker Grinding Unit, Ghana

## Key Customers:

### International



### Domestic

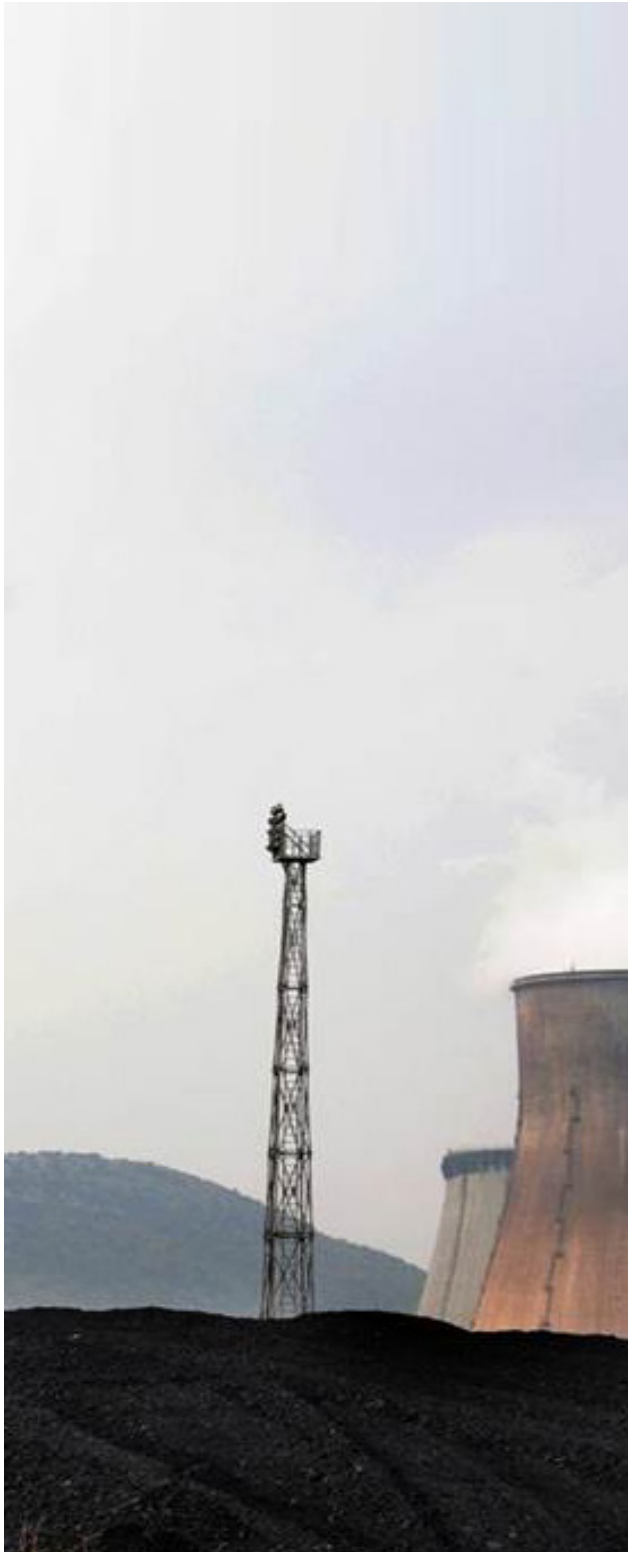


# Industry Solutions

## 2. Power







Promac offers a wide range of EPC solutions for Bulk Material Handling Systems and Balance of Plant (BOP), primarily used in the Power Industry.

Promac has established itself as an equipment major for Power Plants, including complete supply and erection of full Coal Handling Plants (CHP) for Mega Power Projects.

Promac in collaboration with world-renowned Famak S.A. of Poland has established itself as an industry leader in supplying Stock Yard Equipment for Bulk Material Handling Systems.

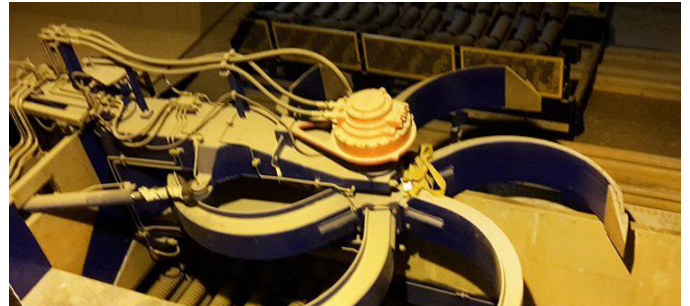
# Power

## Machines/Equipment

1. Bucket Wheel Stacker-cum Reclaimers
2. Rotaside Wagon Tippers
3. Side Arm Chargers
4. Paddle / Plough Feeders
5. Apron Feeders
6. Cross Country Conveyors / Belt Conveyors



Wagon Tippler & Side Arm Charger



Paddle / Plough Feeder



Belt Conveyor



Stacker Cum Reclaimer



# Power

## Key Projects

### A. On EPC Basis:

#### 1. Balance of Plant (BOP):

- Compagnie d' Electricite' du Senegal (CES) - 125 MW Thermal Power Plant, Senegal, West Africa

#### 2. Coal Handling Plant (CHP):

- Karnataka Power Corporation Ltd (KPCL) - 1 x 500 MW Coal Handling Plant, Bellary, India
- DVC Bokaro - 1 x 500 MW Conveyor Package for Bokaro Thermal Power Station, Jharkhand, India

### B. Machine Supply (In India):

#### 1. Stacker CUM Reclaimers:

- 2 nos, 3850 TPH - NTPC Patratu Thermal Power Station, Jharkhand
- 4 nos, 2300 TPH - Ennore SEZ Thermal Power Station, Tamil Nadu
- 1 no, 2200 TPH - Tuticorin Thermal Power Station, stage-IV, Tamil Nadu
- 1 no, 1760 TPH - NTPC Unchahar Thermal Power Station, Uttar Pradesh
- 1 no, 1500 TPH - MAHAGENCO Bhusawal Thermal Power Station, Maharashtra
- 1 no., 1260 TPH - Raichur Thermal Power Station (RTPS), Raichur, Karnataka
- 1 no., 1250 TPH - Bellary Thermal Power Station (BTPS), Bellary, Karnataka

## 2. Rotaside Wagon Tipplers and Side Arm Chargers, Apron Feeders and Dribble Conveyors:

- 4 sets - Yeramaras Thermal Power Station (RTPS), Raichur, Karnataka
- 2 sets - Bellary Thermal Power Station (BTPS), Bellary, Karnataka
- 2 sets - MAHAGENCO Bhusawal Thermal Power Station, Maharashtra
- 2 nos - NTPC Unchahar Thermal Power Station, Uttar Pradesh

## 3. Paddle Feeders:

- 4 nos, 780 TPH - Bellary Thermal Power Station (BTPS), Bellary, Karnataka
- 2 nos, 185 TPH - NTPC North Karanpura Thermal Power Station Jharkhand
- 8 nos, 2625 TPH - NTPC Patratu Thermal Power Station, Jharkhand
- 2 nos 225 TPH - NTPC Patratu Thermal Power Station, Jharkhand

## Key Customers:



# Industry Solutions

## 3. Mineral Beneficiation

Promac offers complete turnkey solutions for Mineral Processing Industries with a focus on Gold, Iron, and Copper ores.

## 4. Defence and Import Substitutes

Promac has ventured into the Defence sector and Import Substitutes market, offering customized contract manufacturing solutions including precision machining sub-assemblies and components.

## 5. Industrial Gear Boxes

Promac offers a range of heavy duty gear boxes catering to various industrial applications.

## 6. Port

Backed by its collaboration with Famak S.A. of Poland, Promac has ventured into the manufacturing and production of various port equipment.

- Ship Unloaders
- Electric Level Luffing Cranes (ELL)
- Rail Mounted Gantry Cranes (RMGC)
- Ship Loaders

## 7. Sponge Iron

Promac offers complete turnkey solutions for Sponge Iron plants.

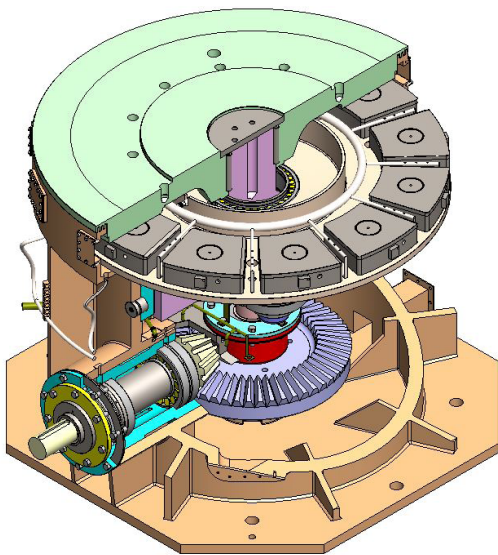




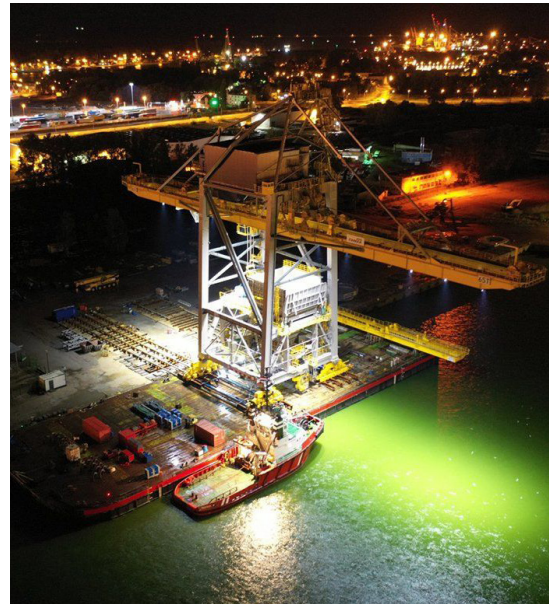
Mineral Beneficiation



Defence



Industrial Gear Boxes



Port



Sponge Iron Plant



# Infrastructure

## Machine Shop



Vertical Turret Lathes with machining capacity up to 10.5m  $\Phi$ , 3m height and job weight of 100 tonnes



Gear Hobbing Machine up to 8m  $\Phi$





Floor Boring Machines up to 6m travel length with spindle  $\Phi$  of 130 mm



4m  $\Phi$  Vertical Turret Lathe



Heavy Duty CNC Lathe



EOT Cranes upto 100 tonne Handling Capacity



# Infrastructure

## Fabrication



View of Heavy Fabrication Bay



Plate Rolling Machines for cold rolling thickness up to 110mm thick x 3m width



Automated Submerged Arc Welding machine





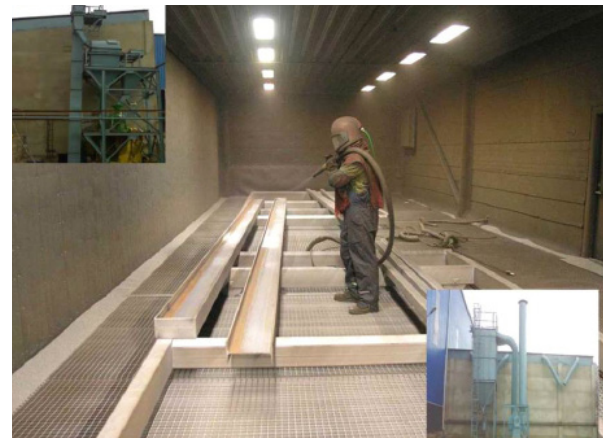
Robo Plasma Cutting Machine (4 axis)



CNC Water Jet Cutting Machine



CNC Plasma Arc / Oxy Fuel Cutting



Shot Blasting Booth



Stress Relieving Furnace



Paint Booth



# Infrastructure

## Laboratory and Quality Control



Spectro Analyser and Universal Testing Machine



Ultra Sonic Testing Machine



Magnetic Particle Tester



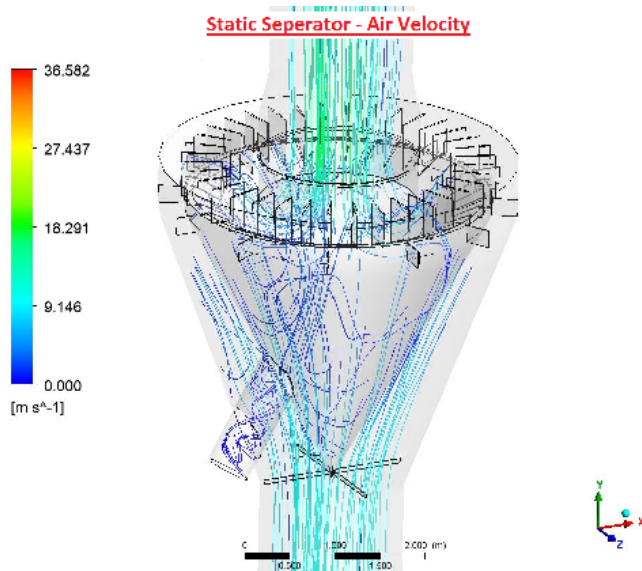
Hardness Tester



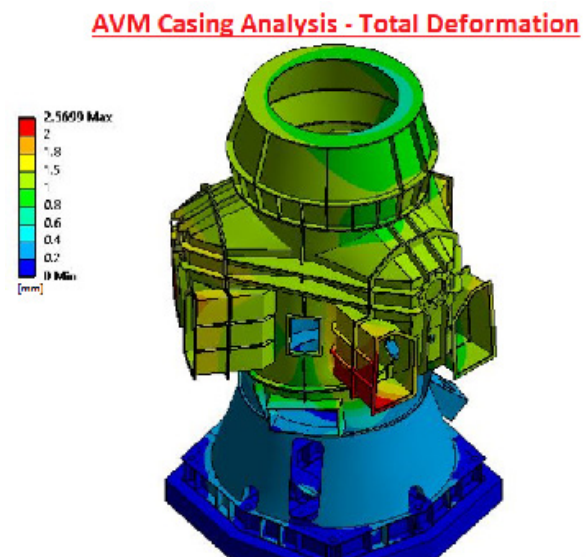
Paint Thickness Gauge



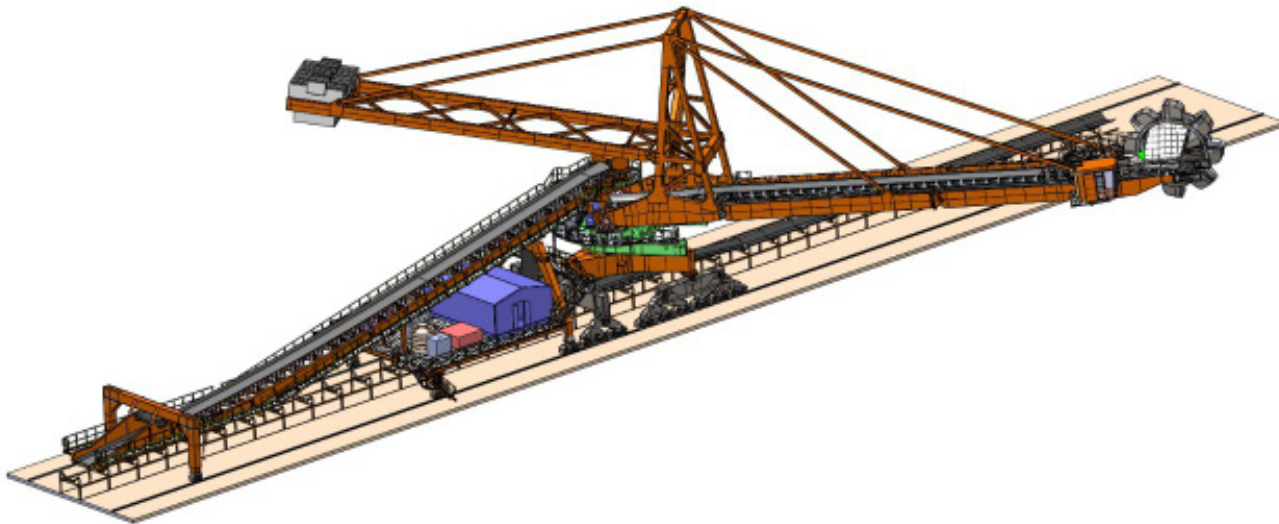
## Design and Engineering Tools



Ansys for Computational Fluid Dynamics (CFD)



Ansys for Finite Element Analysis (FEA)



Solid Works for 3D Modelling

# Technical Collaborations



## **Taiheiyo Engineering Corporation (TEC), Japan.**

1. Collaborator since 1987
2. Provides technology for Cement Plants upto 2 MTPA capacity including the following:
  - Chlorine Bypass technology
  - TCS System for high sulphur raw materials & fuel
  - Taiheiyo Thermal Reactor (TTR) for Plastic Waste Gasification and for Sewage Sludge Drying



## **FAMAK S.A., POLAND**

(Formerly known as FAMUR FAMAK S.A)

1. Collaborator since 2011
2. Provides technology for Bulk Material Handling and Port handling equipment



### **Mr. Madhav Krishna Singhania**

*Deputy MD & CEO - JK Cement Group*

"JK Cement has worked with Promac Engineering since the last 25 years. We have set up two milestones projects in Mangrol and Fujairah with their equipment. Both plants have performed beyond the guaranteed numbers and equipment reliability and support from Promac is excellent."



### **Mr. Sreekanth Reddy Sammidi**

*Joint Managing Director - Sagar Cements Ltd.*

"We have known Promac since 1994 when we placed our first order on them for a grinding mill. In 2018 we took over a 2000 TPD plant supplied by Promac near Tadipatri in Andhra Pradesh and with almost no modification we were able to push the plant to produce 3000 TPD capacity. Promac's state of the art workshop provides us with timely maintenance support for all our plant requirements."



### **Mr. Yoshihisa Miyake**

*Senior Managing Director - TEC*

"Taiheiyo Engineering Corporation (TEC) has been working closely with Promac Engineering since the early 1990s, and we have successfully completed many projects all over the world. We believe that Promac is well equipped to satisfy customers' precise needs. We look forward to building on our business relationship with Promac in the years to follow."



# Awards & Certificates



Export Award from EEPC India 2017



ISO Certificate



Export Award from EEPC India 2013 - 2014



Export Award from EEPC India 2012 - 2013

# Contact



## Corporate Office:

Promac Engineering Industries Limited

(CIN: U24210KA1972PLC002255)

Alahalli, Anjanapura Post,

Off Kanakapura Road,

Bengaluru, Karnataka, India - 560108.



*Scan for location*

## Factory:

Promac Engineering Industries Limited

Plot No. 306 to 309,

KIADB Industrial Area, Harohalli 2<sup>nd</sup> Phase,

Ramanagara District,

Karnataka, India - 562112.



*Scan for location*

---

<b>Phone Number:</b>	+91 8026320372, +91 8026320373
<b>Email Address:</b>	<a href="mailto:sales@promacindia.com">sales@promacindia.com</a>
<b>Website:</b>	<a href="http://www.promacindia.com">www.promacindia.com</a>



Alahalli, Anjanapura Post, Off Kanakapura Road,  
Bengaluru, Karnataka, India - 560108